



Forceps Quick Reference Catalog

- **Bi-Polar**
- **Capsule**
- **Cortex Extraction**
- **Chalazion**
- **Cilia**
- **Corneal**
- **Dressing**
- **Foldable Lens Loaders
& Inserters**
- **Jeweler**
- **Lens**
- **Miscellaneous**
- **Mosquito**
- **Nucleus
Splitting**
- **Serrephine**
- **Tying**



ELEVATING THE QUALITY OF CARE IN OPHTHALMOLOGY
800-637-4346



ELEVATING THE QUALITY OF CARE IN OPHTHALMOLOGY
800-637-4346

CONTENTS

About The Catalog	1
Bi-Polar	3
Capsule-Stainless	4
Capsule-Titanium	7
Chalazion	10
Cilia	12
Corneal-Stainless	13
Corneal-Titanium	20
Dressing	21
Foldable Lens Loaders & Inserters	22
Jeweler	26
Lens	28
Miscellaneous	25
Mosquito	36
Nucleus Splitting	37
Serrefine	37
Tying-Stainless	38
Tying -Titanium	41
Index	44



About the Catalog

All Photographs, Illustrations, And Text In This Catalog Are The Property Of Rhein® Medical, Inc. They Are Copyrighted, And May Not Be Reproduced Without The Written Permission Of Rhein Medical.

Most Of Our Proprietary Instruments Are Offered With A Complimentary Instructional Videotape Or DVD. Should A Video Be Available, The Instrument Will Be Accompanied By A Videotape Symbol Near It.



Capsulorrhexis Forceps

Our Capsulorrhexis Forceps Are Available In A Variety Of Configurations. Some Have Formed Blades, Gaps Between The Blades, Cystotome Tips, And Rounded Distal Tips. Contact Our Customer Service Staff For More Information About Our Selection.

PMMA & Foldable Lens Forceps

The Jaws Of Our Lens Insertion Forceps Are Mirror-Polished In The Blades To Prevent Any Damage To Intraocular Lenses. Our Foldable Lens Loading Forceps Are Designed To Pick Up And Fold Lenses From A Flat Surface, In The Air, Or Under A Microscope.

Tying & Corneal Forceps

Our Titanium Flat-Handled Forceps Have An Elongated Opening Along The Handles For Lighter Weight And More Comfortable Handling. Our Round-Handled Forceps Have A Flat Ridge Along The Spine Of The Handle. This Ridge Offers The Combined Advantages Of A Flat Handle For Stability And Tactile Feedback, Along With The Benefits Of A Round Handle For Uninterrupted Rotation. All Of Our Tying Platforms In Our Titanium Forceps Are Impregnated With Tungsten Carbide To Improve Grip Over Sutures.



Bi-Polar Forceps

- A)** 8-13221 Coaptation Bi-Polar Forceps
- 8-13222 Jewelers Bi-Polar Forceps
- B)** 8-13219 McPherson Straight Bi-Polar Forceps
- 8-13220 McPherson Angled Bi-Polar Forceps
- 8-13146 12' Bi-Polar Cable (Reusable)
- 8-13147 12' Heavy Duty Bi-Polar Cable (Reusable)

Capsule Forceps-Stainless

- C)** 8-01421-L Kershner Butterfly Capsulorrhexis Forceps, Long Handle
- D)** 8-01421-S Kershner Butterfly Capsulorrhexis Forceps, Short Handle

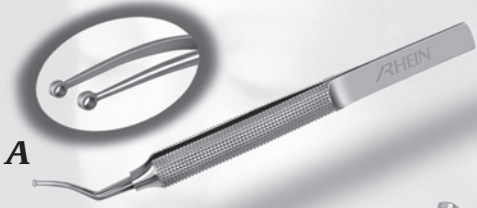

A
Capsule Forceps-Stainless

- A)** 8-01422-N Kershner II 23g Stainless Micro Capsulorrhexis Forceps, 1.0mm Incision
- B)** 8-01428 Sabet Lenticular Safety Net
- 8-01428-B Sabet Lenticular Safety Net, Extra Wire Basket
- C)** 8-01402 Arruga Capsule Forceps, Standard
- 8-01401 Arruga, New Curve, Wide Handle
- D)** 8-01419 Fine 20g Irrigating Capsulorrhexis Forceps, 1.4mm Incisio
- 8-01420 Fine 22g Irrigating Capsulorrhexis Forceps, 1.1mm Incision

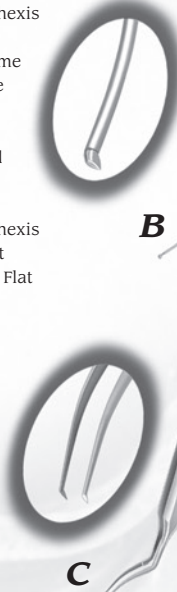

B

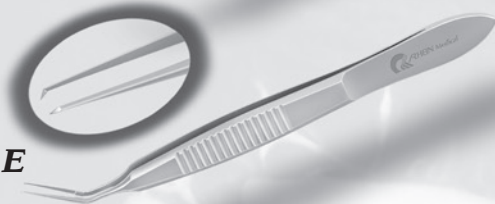
C

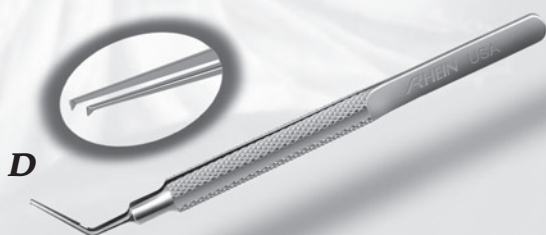
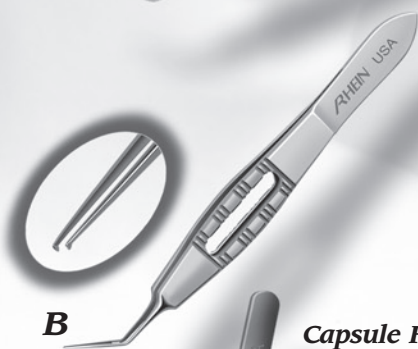
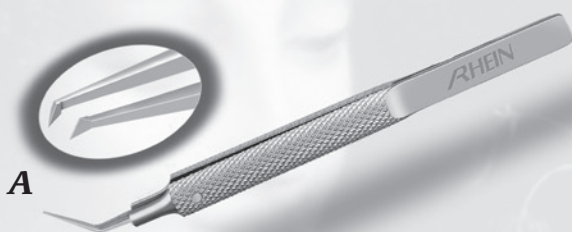
D


A
Capsule Forceps-Stainless

- A)** 8-01416 Khouri Nuclear Fragment Removal Forceps
- B)** 8-01427 Rhein Tubular 23g Capsulorrhexis Forceps, 1.0mm Incision, Stainless
- C)** 8-01424 Short Capsulorrhexis Forceps, Formed Cystotome Tips, Flat Handle
- D)** 8-01426 Short Capsulorrhexis Forceps, Formed Cystotome Tips, Round Handle
- E)** 8-01423 Short Capsulorrhexis Forceps, Straight Cystotome Tips, Flat Handle


B

C

D

E



Capsule Forceps-Stainless

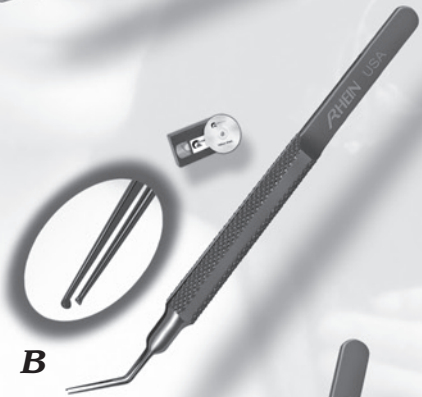
- A)** 8-01425 Short Capsulorrhexis Forceps, Straight Cystotome Tips, Round Handle
- B)** 8-01413 Utrata Capsulorrhexis Forceps - Flat Handle
- C)** 8-01414 Utrata Capsulorrhexis Forceps - Round Handle
- D)** 8-01415 Utrata/Kershner Capsulorrhexis Cystotome Forceps 11.5mm Blades



Capsule Forceps-Titanium

- A)** 05-2329 Brown-Grabow Capsulorrhexis Cystotome Forceps-Titanium
- B)** 05-2328 Casebeer Capsulorrhexis Forceps-Titanium
- C)** 05-2327 Connor Capsulorrhexis Peeler Forceps-Titanium
- D)** 05-2360 Fine Head-Tilt Capsulorrhexis Cystotome Forceps-Titanium
- E)** 05-2321 Rhein Colbri Capsulorrhexis Forceps 0.1mm Pierce Formed Jaws-Titanium

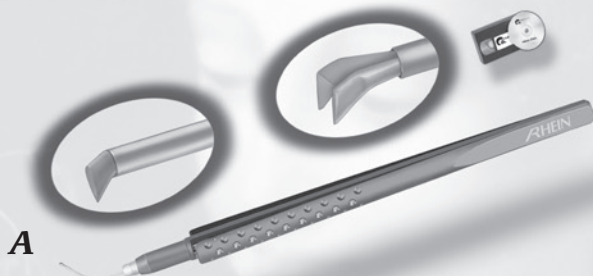



A

B
Capsule Forceps-Titanium

- A)** 05-2323 Formed Utrata/Kershner Capsulorrhexis Cystotome Forceps, 11.5mm Blades-Titanium
- B)** 05-2361 Goldman Capsulorrhexis Forceps-Titanium
- C)** 05-2320 Kershner Capsulorrhexis Forceps, 8mm Blades- Titanium
- D)** 05-2326 Rhein Capsulorrhexis Cystotome Forceps-Titanium

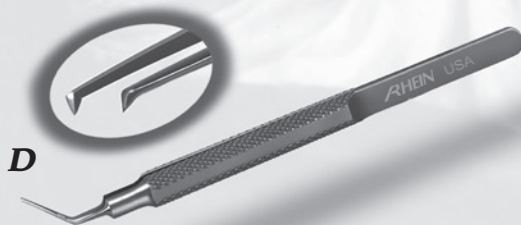

C

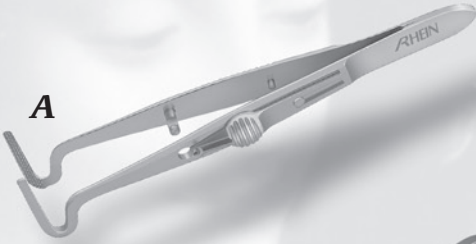
D



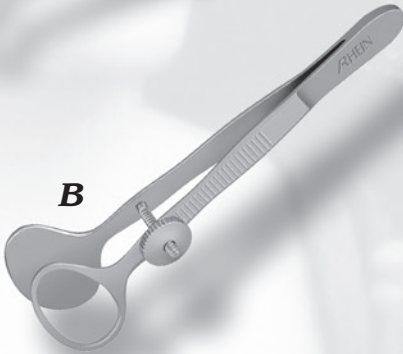
Capsule Forceps-Titanium

- A)** 05-2362 Rhein Tubular 23g Capsulorrhexis Forceps, 1.0mm Incision-Titanium
- B)** 05-2318 Utrata Capsulorrhexis Forceps, Flat Handle-Titanium
- C)** 05-2319 Utrata Capsulorrhexis Forceps, Round Handle-Titanium
- D)** 05-2322 Utrata/Kershner Capsulorrhexis Cystotome Forceps 11.5mm Blades-Titanium





A



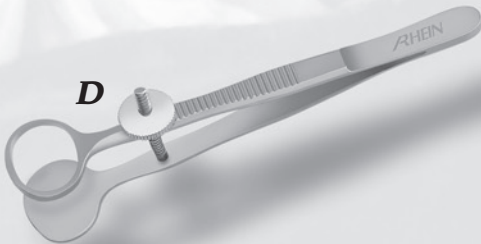
B



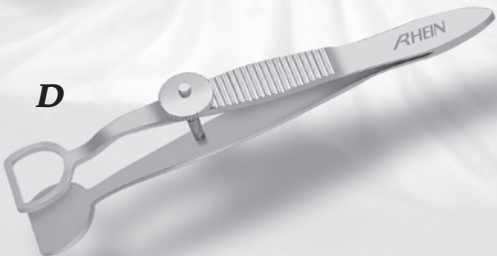
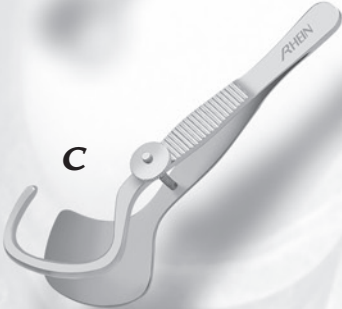
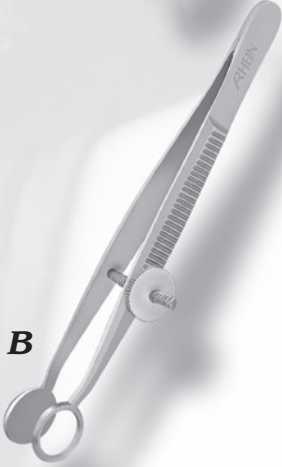
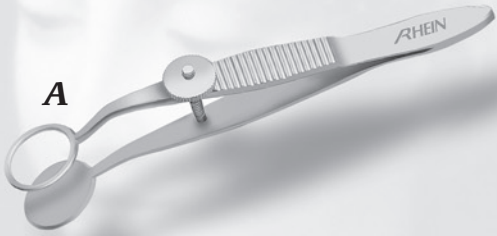
C

Chalazion Forceps

- A)** 8-01704 Berke Ptosis Forceps, 20mm Blades w/Lock
- 8-01705 Berke Ptosis Forceps, 27mm Blades w/Lock
- B)** 8-01703 Desmarres Forceps, Large 17x28mm
- 8-01702 Desmarres Forceps, Medium 12x23mm
- 8-01701 Desmarres Forceps, Small 11x17mm
- C)** 8-01706 Ehrhardt Lid Forceps, Serrated Jaw 9.5mm
- D)** 8-01715 Francis Chalazion Forceps, 12x14mm

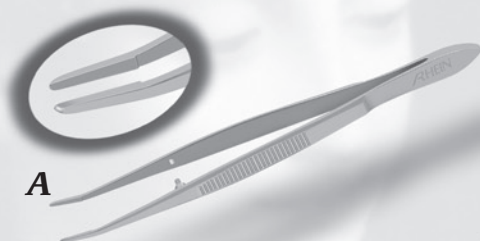


D



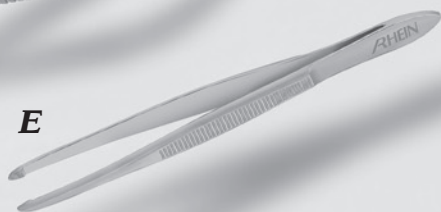
Chalazion Forceps

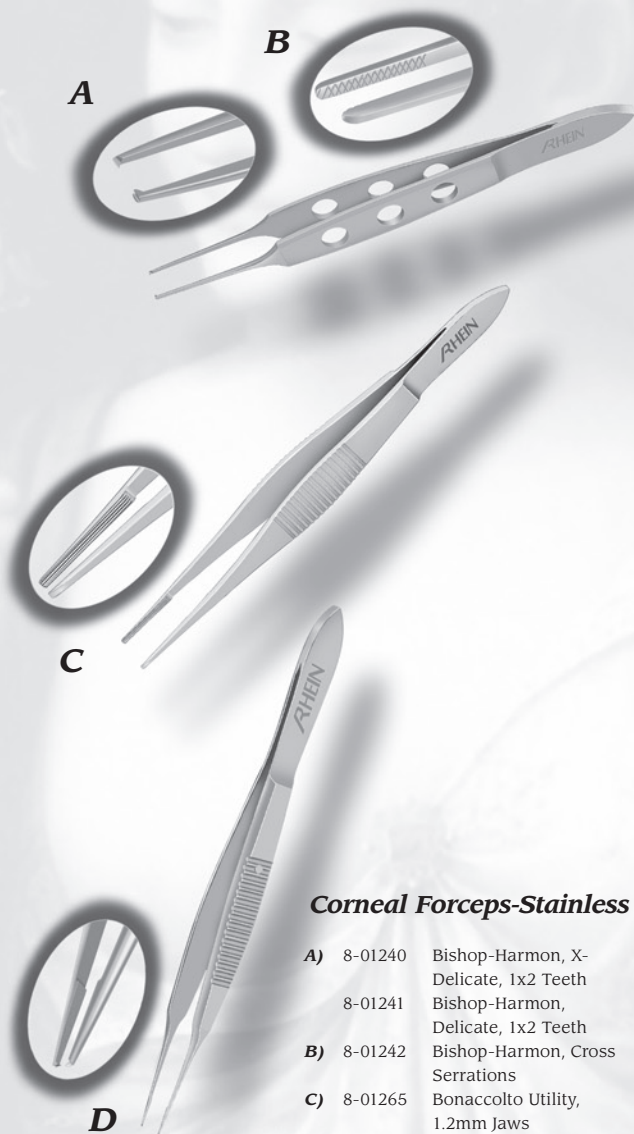
- A)** 8-01711 Hunt Chalazion Forceps, 12mm
- B)** 8-01710 Lambert Chalazion Forceps, 8mm
- C)** 8-01708 Snellen Entropium Forceps, Right 35mm Plate
- 8-01707 Snellen Entropium Forceps, Left 35mm Plate
- D)** 8-01714 Wies Chalazion Forceps, 9x12mm



Cilia Forceps

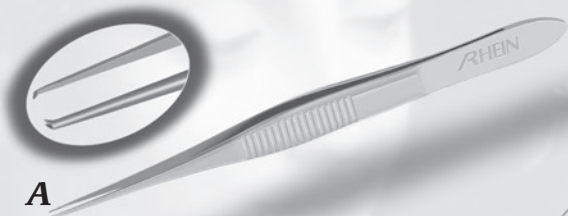
- A)** 8-01602 Barraquer Cilia Forceps
- B)** 8-01624 Bennett Cilia Forceps, 3mm Cup Jaws
- C)** 8-01619 Douglas Cilia Forceps, 2.5mm
- D)** 8-01626 Gradle Cilia Forceps, 1.4mm Wide Jaws
- E)** 8-01620 Ziegler Cilia Forceps, 3-1/2", Smooth





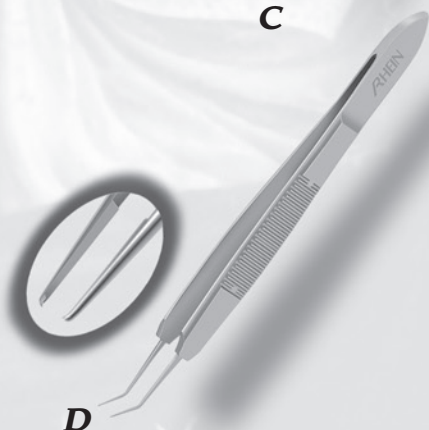
Corneal Forceps-Stainless

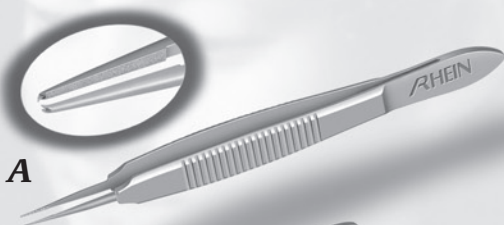
- | | | |
|-----------|---------|---|
| A) | 8-01240 | Bishop-Harmon, X-Delicate, 1x2 Teeth |
| | 8-01241 | Bishop-Harmon, Delicate, 1x2 Teeth |
| B) | 8-01242 | Bishop-Harmon, Cross Serrations |
| C) | 8-01265 | Bonaccolto Utility, 1.2mm Jaws |
| | 8-01266 | Bonaccolto Utility, 1.7mm Jaws |
| D) | 8-01205 | Bonn Long Forceps, .12mm 1x2 Teeth, 95mm Length, 5mm Tying Platform |
| | 8-01204 | Bonn Short Forceps, .12mm 1x2 Teeth, 75mm Length |



Corneal Forceps-Stainless

- A)** 8-01301 Bracken Fixation Forceps, 1x2 Teeth
- B)** 8-01302 Hyde Corneal Forceps, 2x2 Teeth, 0.12mm w/Tying Platform
- C)** 8-01259 Castroviejo Colibri, .12mm
- D)** 8-01251 Castroviejo, .12mm, Angled, 5mm Tying Platform
- 8-01252 Castroviejo, .3mm, Angled
- 8-01253 Castroviejo, .5mm, Angled




A

B
Corneal Forceps-Stainless
A) 8-01248 Castroviejo, .12mm, Straight, 5mm Tying Platform

8-01249 Castroviejo, .3mm, Straight, 5mm Tying Platform

8-01250 Castroviejo, .5mm, Straight, 5mm Tying Platform

B) 8-01254 Castroviejo, .12mm, Wide Handle, Straight, 5mm Tying Platform

8-01255 Castroviejo, .3mm, Wide Handle, Straight, 5mm Tying Platform

8-01256 Castroviejo, .5mm, Wide Handle, Straight, 5mm Tying Platform

8-01257 Castroviejo, .6mm, Wide Handle, Straight, 8mm Tying Platform

8-01258 Castroviejo, .9mm, Wide Handle, Straight, 5mm Tying Platform

C) 8-01222 Colibri Forceps .12mm, 1x2 Teeth, 5mm Tying Platform

D) 8-01220 Colibri Utility, .12mm, X-Delicate, 5mm Tying Platform

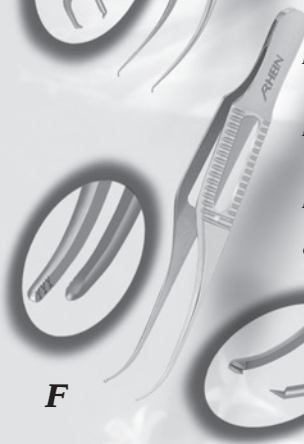
E) 8-01223 Colibri w/Tying Platform, .3mm, 8mm Tying Platform

F) 8-01216 Gill (Chandler) Serrated Tip

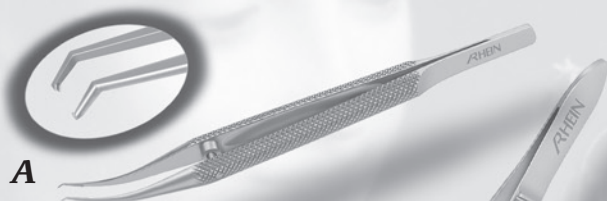
G) 8-01215 Gill, 1x2 Teeth, Curved

C

D

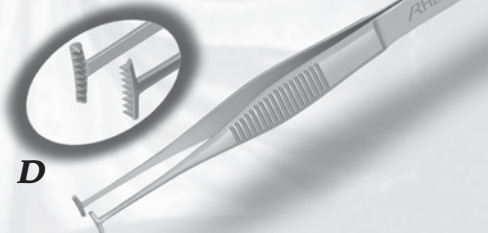
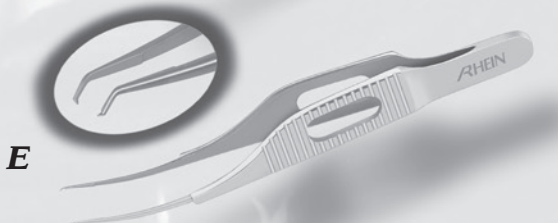
E

F

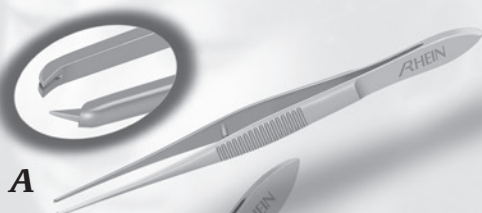
G


A

B
Corneal Forceps-Stainless

- A)** 8-01243 Girard Corneo-Scleral, .12mm 1x2 Teeth
- B)** 8-01206 Graefe Iris, 1x2 Teeth, Straight
- 8-01207 Graefe Iris, 1x2 Teeth, Curved
- C)** 8-01208 Graefe Iris, Serrated Tip, Straight
- 8-01209 Graefe Iris, Serrated Tip, Curved
- D)** 8-01291 Green Fixation, 5mm Jaws 8x9 Teeth
- E)** 8-01221 Harms Colibri Forceps .12mm w/Tying Platforms


C

D

E


A

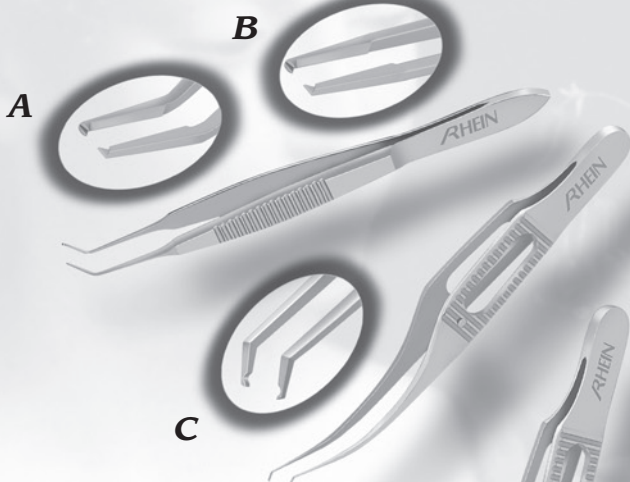
B
Corneal Forceps-Stainless

- A)** 8-01231 Elschmig, 1x2 Teeth, Straight
- B)** 8-01285 Kremer Fixation Forceps 1x2, .12mm Curved
- 8-01284 Kremer Fixation Forceps 1x2, .12mm Straight
- C)** 8-01294 Lester Fixation 1x2 Teeth
- D)** 8-01295 Lester Fixation 2x3 Teeth
- E)** 8-01270 Maumenee Colibri .12mm 1x2 Teeth 5mm Tying Platform


C

D

E

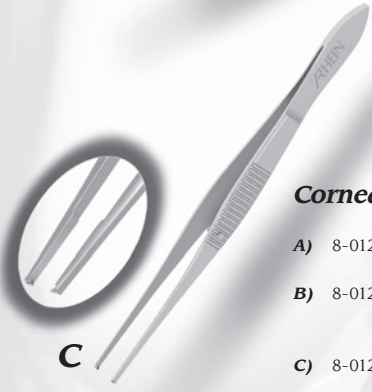


Corneal Forceps-Stainless

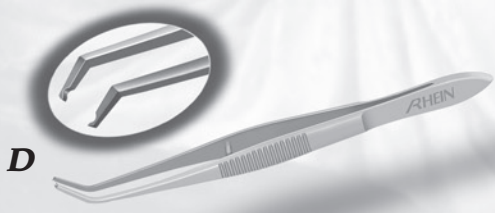
- A)** 8-01218 McPherson, 1x2 .12mm Teeth, Angled
5mm Tying Platforms
- 8-01219 Kelman/McPherson, 1x2 .12mm Teeth, Angled 8mm Tying Platforms
- B)** 8-01217 McPherson, 1x2 .12mm Teeth, Straight
5mm Tying Platforms
- C)** 8-01224 Pierse Colibri, .1mm Teeth
- 8-01225 Pierse Colibri, .3mm Teeth
- D)** 8-01261 Polack, Double .12mm Corneal Fixation
- 8-01262 Polack, Double Corneal Fixation
Pierse .1mm
- F)** 8-01271 Sauer Suturing Forceps, .6mm Teeth

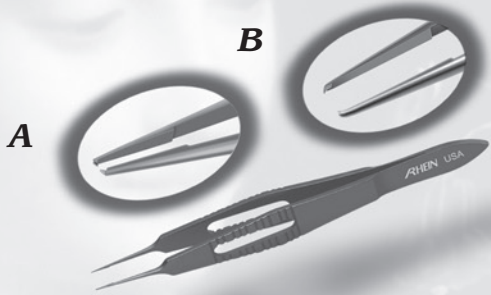



A

B

C
Corneal Forceps-Stainless

- A)** 8-01298 Tennant Superior Rectus Forceps, Curved
- B)** 8-01239 Thorpe Corneal Forceps, 2x3 Teeth, 5mm Tying Platform
- C)** 8-01234 Tissue, Delicate, 1x2 Teeth, Straight
- 8-01235 Tissue, Delicate, 1x2 Teeth, Slight Curve
- D)** 8-01299 Troutman Superior Rectus Forceps


D



Corneal Forceps-Titanium

- A)** 05-2216 Bonn, Straight, 1x2 Teeth, .12mm, w/5mm Tying Platform, 4"-Titanium,
 05-2217 Bonn, Curved, 1x2 Teeth, .12mm, w/5mm Tying Platform, 3-3/8"-Titanium
 05-2215 Bonn, Straight, 1x2 Teeth, .12mm, w/Platform, 3-3/8"-Titanium

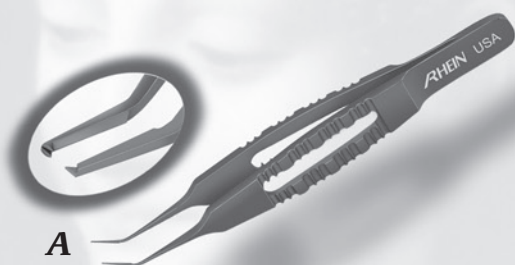
- B)** 05-2220 Castroviejo, Straight, 1x2 Teeth, .12mm, w/4mm Tying Platform, 4"-Titanium
 05-2221 Castroviejo, Straight, 1x2 Teeth, .3mm, w/Platform, 4"-Titanium

- C)** 05-2225 Colibri, .12mm Teeth, w/Platform, 3-3/8"-Titanium
 05-2226 Colibri, .12mm Teeth, w/5mm Tying Platform, 4"-Titanium

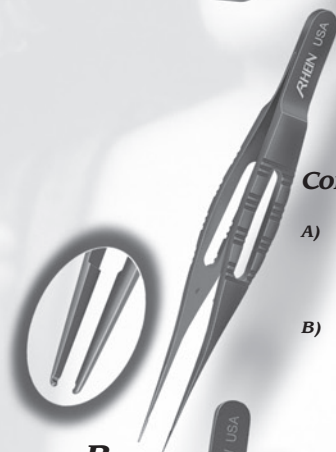
- D)** 05-2224 Colibri, Pierse Teeth, w/5mm Tying Platform, 3-3/8"-Titanium

- E)** 05-2229 Colibri, Troutman/Barraquer, .12 Teeth, w/Platform, 3"-Titanium



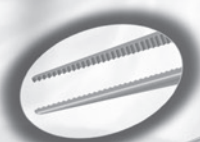

A
Corneal Forceps-Titanium

- A)** 05-2232 McPherson, Angled, .12mm Teeth, w/Platform, 3-3/8"-Titanium
- B)** 05-2211 Pierse Type, Straight, w/Platform, 3-3/8"-Titanium
- 05-2212 Pierse Type, Curved, w/Platform, 3-3/8"-Titanium
- C)** 05-2218 Rhein, Straight, 45 Degree 1x2 Teeth, .12mm, 3-3/8"-Titanium, 5mm Tying Platform

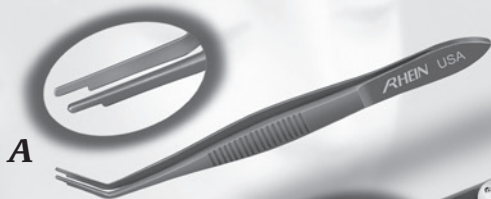

B

C
Dressing Forceps

- D)** 8-01501 Dressing Forceps Delicate, Straight
- 8-01502 Dressing Forceps Delicate, Curved
- E)** 8-01504 Dressing Forceps Standard, Straight
- 8-01505 Dressing Forceps Standard, Curved

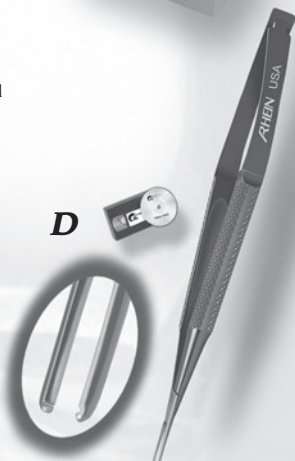

D

E

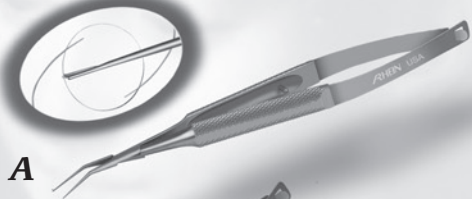

A
B
Foldable Lens Loaders & Inserters

- A)** 05-2357 Fine Collamer & ICL Lens Loading Forceps-Titanium
- B)** 05-2356 Fine Collamer & ICL Loading Platform, SFC-45-Titanium
05-2355 Fine Collamer & ICL Loading Platform, SFC-25-Titanium
- C)** 05-2332 Fine Foldable Lens Loading Block-Stainless
- D)** 05-2331 Fine I Inserter Straight-Titanium w/o Lock
05-2331-L Fine I Inserter Straight w/Lock-Titanium
- E)** 05-2334-AL Fine II Inserter, Angled w/Lock-Titanium
05-2334-A Fine II Inserter, Angled-Titanium
05-2334-L Fine II Inserter, Straight w/Lock-Titanium
05-2334 Fine II Inserter, Straight-Titanium w/o Lock
- F)** 05-2333 Fine Lens Loading Forceps-Titanium w/o Lock


C

D

E

F



**Foldable Lens
Loaders & Inserters**

- A)** 05-2410 Hess Memory Lens Inserter-Titanium
- B)** 05-2400 Kellan Inserter-Titanium
- C)** 05-2402 Lehner I Loader-Titanium
- D)** 05-2377 Lehner II Acrylic Lens Inserter-Titanium w/Lock
- E)** 05-2376 Lehner II Acrylic Lens Loader-Titanium

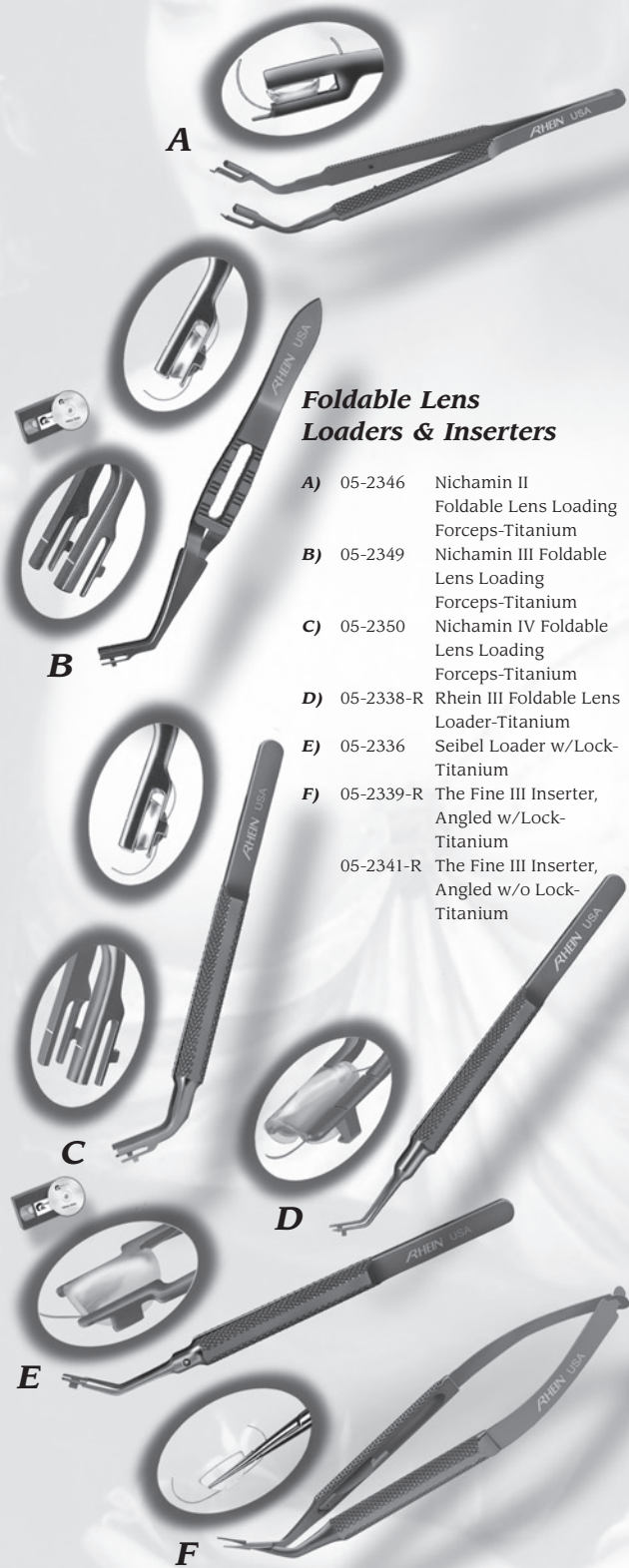

A

B
**Foldable Lens
Loaders & Inserters**

- A)** 05-2375 Lindstrom Lens Inserter-Titanium
- B)** 05-2344 Nichamin I Foldable Lens Insertion Forceps-Titanium w/Lock
- C)** 05-2342 Nichamin I Foldable Lens Loading Forceps-Titanium
- D)** 05-2348 Nichamin II Foldable Lens Insertion Forceps-Titanium w/Lock

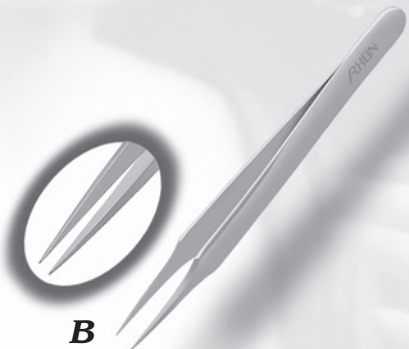

C

D



**Foldable Lens
Loaders & Inserters**

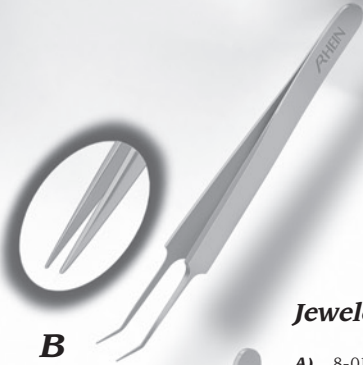
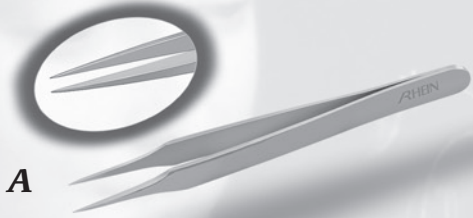
- A) 05-2346 Nichamin II Foldable Lens Loading Forceps-Titanium
- B) 05-2349 Nichamin III Foldable Lens Loading Forceps-Titanium
- C) 05-2350 Nichamin IV Foldable Lens Loading Forceps-Titanium
- D) 05-2338-R Rhein III Foldable Lens Loader-Titanium
- E) 05-2336 Seibel Loader w/Lock-Titanium
- F) 05-2339-R The Fine III Inserter, Angled w/Lock-Titanium
05-2341-R The Fine III Inserter, Angled w/o Lock-Titanium



Jewelers Forceps

- A)** 8-01603 Jeweler Forceps, #1, Straight
- B)** 8-01604 Jeweler Forceps, #2, Straight
- C)** 8-01605 Jeweler Forceps, #3, Straight
- D)** 8-01606 Jeweler Forceps, #3C, Straight





Jewelers Forceps

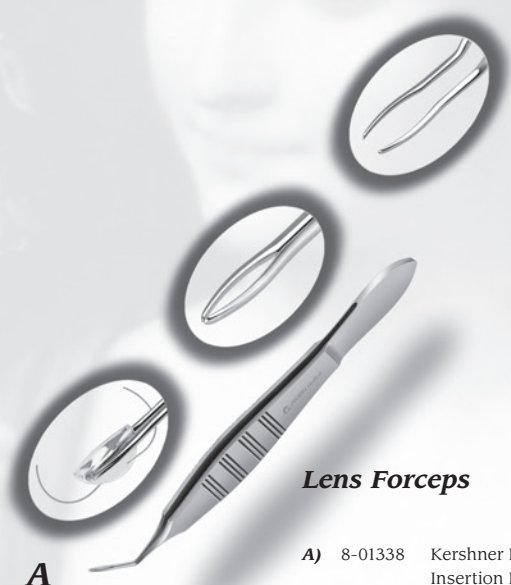
- A)** 8-01607 Jeweler Forceps, #4, Straight
- B)** 8-01611 Jeweler Forceps, #5, Angled 45 Degrees
- C)** 8-01608 Jeweler Forceps, #5, Straight
- D)** 8-01609 Jeweler Forceps, #7, Curved



Lens Forceps

- A)** 05-2314 Blaydes Lens Insertion Forceps, Titanium
- B)** 8-01335 Faulkner Lens Insertion Forceps X-Action
- C)** 8-01336 Fine Foldable Lens Insertion Forceps



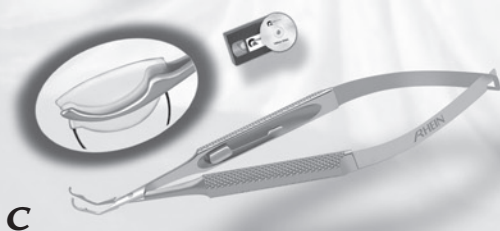


Lens Forceps

- A)** 8-01338 Kershner Foldable Lens Insertion Forceps
- B))** 8-01318 Kraff Lens Insertion Forceps
- C)** 8-01380 Lehner I Lens Inserter



B



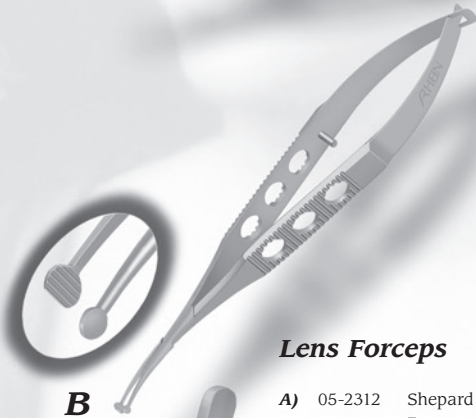
C



Lens Forceps

- A)** 05-2325 Lindstrom Lens Insertion Forceps w/Notch-Titanium
- 05-2330 Lindstrom Lens Insertion Forceps w/o Notch-Titanium
- B)** 05-2311 Rhein Universal Lens Insertion Forceps-Titanium
- C)** 05-2340 Rhein Cross Action Pierce Tooth Lens Forceps-Titanium
- D)** 8-01390 Serdarevic Lens Inserter





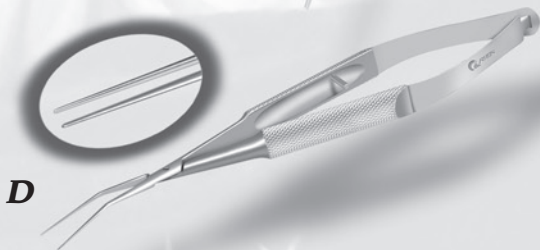
Lens Forceps

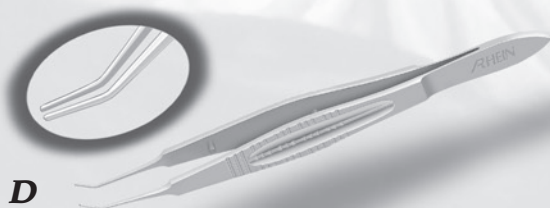
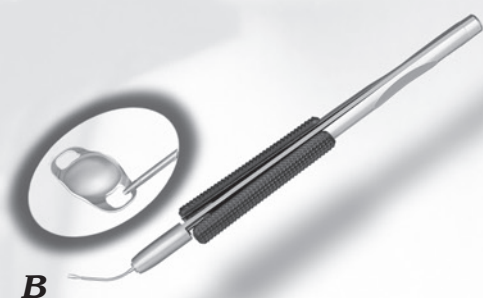
- A)** 05-2312 Shepard Lens Insertion Forceps-Titanium
- B)** 8-01325 Shepard Lens Insertion Forceps w/Notch-Titanium
- C)** 8-01340 Dusek-McIntyre Forceps
- D)** 8-01397 Rhein ICL Retrieval Forceps, 12mm Blades, Angled Jaws
- E)** 8-01398 Rhein Crystalens Lens Insertion Forceps



Lens Forceps

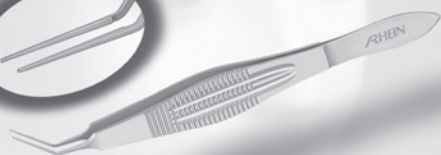
- A)** 8-01350 Fine Collamer & ICL Lens Loading Forceps
- B)** 8-01351 Collamer & ICL Cartridge Loading Block
- C)** 8-01396 Vukich Loading Forceps, Direct Acting
- D)** 8-01352 Vukich Collamer & ICL Cartridge Loading Forceps, Cross Acting





Lens Forceps

- A)** 8-01337 Faulkner Lens Holder
- B)** 8-01392-D Rhein Artisan Lens Holding Forceps, Direct Acting, 22g
8-01392-R Rhein Artisan Lens Holding Forceps, Reverse Acting
- C)** 8-01334 Rhein I Lens Holding Forceps
- D)** 8-01339 Rhein II Lens Holding Forceps


A

B

Lens Forceps

- A)** 8-01345 Gaskin Fragment Forceps
- B)** 8-01310 Knolle/Shepard w/Peg, Serrated Jaws
- C)** 8-01341 Utrata Foldable Lens Retriever
- D)** 8-01347 Stolte Hawksbill Pre-Chopper, Angled Handle
- E)** 8-01346-A Stolte Pre-Chopper, Angled Handle, Straight Blades
- F)** 8-01346-S Stolte Pre-Chopper, Straight Handle, Straight Blades


C

D

E

F


A

B

Miscellaneous
Canal

- A) 8-01300 Schlemm's Canal Tissue Forceps, Stainless
- B) 05-2233 Schlemm's Canal Tissue Forceps, Titanium

DSEK

- C) 8-01303 Steinert DSEK Insertion Forceps

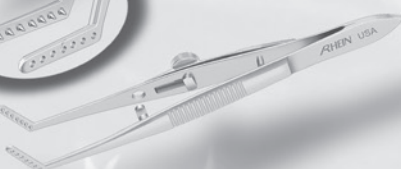
Glacoma

- D) 8-01632 Brown Glaucoma Tube Forceps

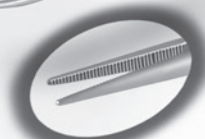
Mucslc

- E) 8-01630 Jameson Muscle Forceps, Left w/Lock
- 8-01631 Jameson Muscle Forceps, Right w/Lock

D

E


A

B

Mosquito Forceps

- A)** 85-5024 Halsted Mosquito Forceps, 5", Curved Standard
- B)** 85-5023 Halsted Mosquito Forceps, 5", Straight Standard
- C)** 85-5026 Halsted Mosquito Forceps, 5", Curved X-Delicate
- D)** 85-5025 Halsted Mosquito Forceps, 5", Straight X-Delicate
- E)** 85-5019 Hartman Mosquito Forceps, 3-1/2" Curved
- 85-5018 Hartman Mosquito Forceps, 3-1/2" Straight

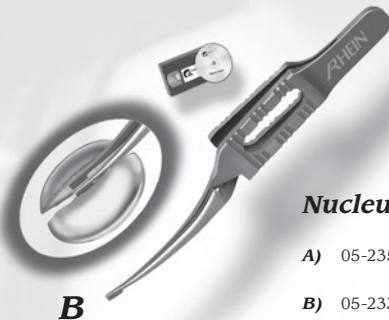
C

D

E




A



B

Nucleus Splitting Forceps

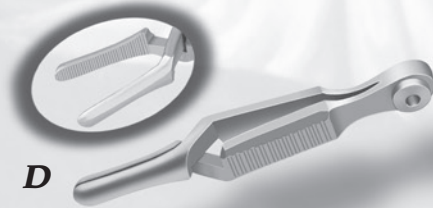
- A) 05-2351 Koch-Salz Nucleus Splitter-Titanium
- B) 05-2335 Salz Nucleus Splitter-Titanium



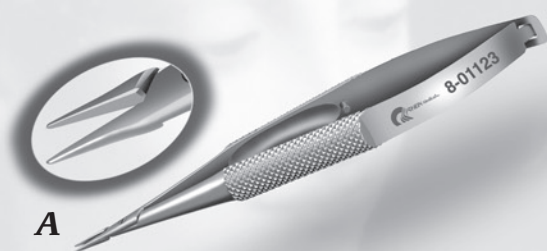
C

Serrefine Forceps

- C) 8-13110 Serrefine 1-1/2", Curved With Suture Hole
- 8-13111 Serrefine 2-1/2", Curved With Suture Hole
- D) 8-13108 Serrefine 1-1/2", Straight With Suture Hole
- 8-13109 Serrefine 2-1/2", Straight With Suture Hole

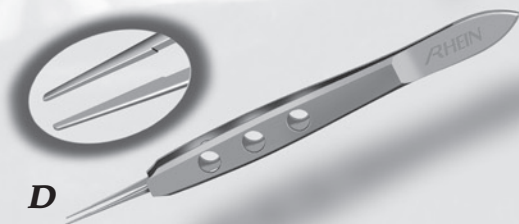


D


A

B
Tying Forceps-Stainless

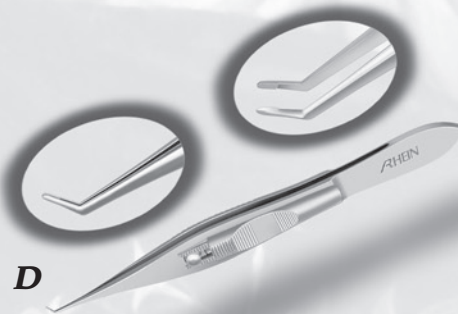
- A)** 8-01123 Anis Tying Forceps, Straight, Round Handle
- 8-01122 Anis Tying Forceps, Curved, Round Handle
- B)** 8-01116 Bechert/McPherson Tying Forceps Angled 10mm Tying Platforms
- C)** 8-01108 Harms Tying Forceps, Straight 7mm Tying Platforms
- 8-01109 Harms Tying Forceps, Curved 7mm Tying Platforms
- D)** 8-01110 Jaffe Tying Forceps, Straight 6mm Tying Platforms
- 8-01111 Jaffe Tying Forceps, Curved 6mm Tying Platforms

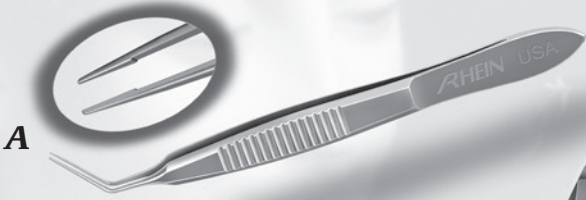

C

D


A

B
Tying Forceps-Stainless

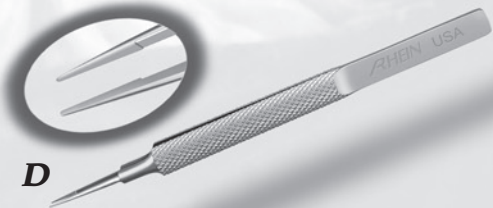
- A) 8-01102 Kelman/McPherson, Angled 8mm Tying Platforms
- B) 8-01103 Kelman/McPherson, Round Handle, Angled 8mm Tying Platforms
- C) 8-01107 McPherson, Angled, Micro 5mm Tying Platforms
- 8-01106 McPherson, Straight, Micro 5mm Tying Platforms
- D) 8-01124 Pfister PKP Suture Adjustment Forceps & Spatula


C

D



Tying Forceps-Stainless

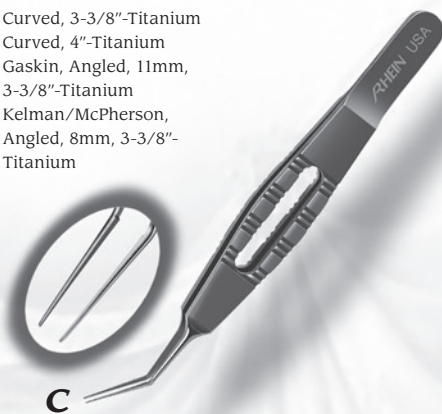
- A)** 8-01101 Sheets McPherson Forceps, Angled Tying 10.5mm Platforms w/1mm Tip Of Cross Serrations
- B)** 8-01121 Sinskey Tying Forceps, Curved
- 8-01120 Sinskey Tying Forceps, Straight
- C)** 8-01115 Tennant Tying Forceps, Curved 6mm Tying Platforms
- D)** 8-01114 Tennant Tying Forceps, Straight 6mm Tying Platforms





Tying Forceps-Titanium

- A)** 05-2112 Curved, 3-3/8"-Titanium
- B)** 05-2116 Curved, 4"-Titanium
- C)** 05-2127 Gaskin, Angled, 11mm, 3-3/8"-Titanium
- D)** 05-2123 Kelman/McPherson, Angled, 8mm, 3-3/8"-Titanium




A

B
Tying Forceps-Titanium

- A) 05-2124 Kelman/McPherson, Angled, 8mm, 4"-Titanium
- B) 05-2119 McPherson, Angled, 5mm, 3-3/8"-Titanium
- 05-2120 McPherson, Angled, 5mm, 4"-Titanium
- C) 05-2134 Rhein/Maumenee Cross Action- Titanium
- D) 05-2131 Round Handle w/Flat Ridge, Curved, 4"-Titanium

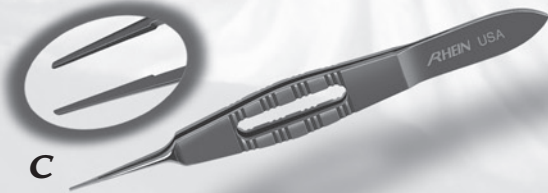

C

D



Tying Forceps-Titanium

- A)** 05-2130 Round Handle w/Flat Ridge, Straight, 4"-Titanium
- B)** 05-2111 Straight 3-3/8"-Titanium
- C)** 05-2120 Straight, 4"-Titanium



Index

Number	Description	Pg.	Photo
8-13146	12' Bi-Polar Cable	3	
8-13147	12' Heavy Duty	3	
8-01122	Anis Tying Forceps, Curved...	38	
8-01123	Anis Tying Forceps, Straight...	38	A
8-01402	Arruga Capsule Forceps...	4	C
8-01401	Arruga, New Curve, Wide...	4	
8-01602	Barraquer Cilia Forceps	12	A
8-01116	Bechert/McPherson Tying...	38	B
8-01624	Bennett Cilia Forceps...	12	B
8-01704	Berke Ptosis Forceps, 20mm...	10	A
8-01705	Berke Ptosis Forceps, 27mm...	10	
8-01242	Bishop-Harmon, Cross Ser...	13	B
8-01242	Bishop-Harmon, Cross Ser...	13	B
8-01241	Bishop-Harmon, Delicate...	13	
8-01240	Bishop-Harmon, X-Delicate...	13	A
05-2314	Blaydes Lens Insertion Forc...	28	A
8-01315	Blaydes Lens Insertion...	28	
8-01265	Bonaccolto Utility, 1.2mm...	13	C
8-01266	Bonaccolto Utility, 1.7mm...	13	
8-01265	Bonaccolto Utility, 12mm...	13	C
8-01205	Bonn Long Forceps, .12mm...	13	D
8-01204	Bonn Short Forceps, .12mm...	13	
05-2217	Bonn, Curved, 1x2 Teeth, .12mm.20		
05-2216	Bonn, Straight, 1x2 Teeth...	20	A
05-2215	Bonn, Straight, 1x2 Teeth...	20	
8-01301	Bracken Fixation Forceps...	14	A
8-01632	Brown Glaucoma Tube...	35	D
05-2329	Brown-Grabow Cystotome...	7	A
05-2328	Casebeer Capsulorrhexis...	7	B
8-01259	Castroviejo Colibri, .12mm...	14	C
8-01251	Castroviejo, .12mm, Angled...	14	D
8-01248	Castroviejo, .12mm, Straight...	14	E
8-01254	Castroviejo, .12mm, Wide...	15	A
8-01252	Castroviejo, .3mm, Angled	14	
8-01249	Castroviejo, .3mm, Straight...	14	
8-01255	Castroviejo, .3mm, Wide...	15	
8-01253	Castroviejo, .5mm, Angled...	14	
8-01250	Castroviejo, .5mm, Straight...	14	
8-01256	Castroviejo, .5mm, Wide...	15	
8-01257	Castroviejo, .6mm, Wide...	15	
8-01258	Castroviejo, .9mm, Wide...	15	
05-2220	Castroviejo, Straight, 1x2...	20	B
05-2221	Castroviejo, Straight, 1x2...	20	
8-13221	Coaptation Bi-Polar...	3	A
8-01222	Colibri Forceps .12mm, 1x2...	15	B
8-01220	Colibri Utility, .12mm, X-Del...	15	C
8-01223	Colibri w/Tying Platform...	15	D
05-2226	Colibri, .12mm Teeth, w/ ...	20	
05-2225	Colibri, .12mm Teeth, w/...	20	C
05-2224	Colibri, Pierse Teeth, w/5mm...	20	D
05-2229	Colibri, Troutman/Barraquer...	20	E
8-01351	Collamer & ICL Cartridge...	32	B
05-2327	Connor Capsulorrhexis...	7	C
05-2112	Curved, 3-3/8"-Titanium...	41	A
05-2116	Curved, 4"-Titanium	41	B
8-01703	Desmarres Forceps, Large...	10	B
8-01702	Desmarres Forceps, Medium...	10	
8-01701	Desmarres Forceps, Small...	10	

Index

Number	Description	Pg.	Photo
8-01619	Douglas Cilia Forceps...	12	C
8-01504	Dressing Forceps	21	E
8-01502	Dressing Forceps Delicate...	21	
8-01501	Dressing Forceps Delicate...	21	D
8-01505	Dressing Forceps Standard...	21	
8-01340	Dusek-McIntyre Forceps	31	C
8-01706	Ehrhardt Lid Forceps...	10	C
8-01231	Elschnig, 1x2 Teeth...	17	A
8-01337	Faulkner Lens Holder	33	A
8-01335	Faulkner Lens Insertion...	28	D
8-01419	Fine 20g Irrigating Caps...	4	D
8-01420	Fine 22g Irrigating Caps...	4	
8-01350	Fine Collamer & ICL Lens...	32	A
05-2357	Fine Collamer & ICL Lens...	22	A
05-2356	Fine Collamer & ICL Loading...	22	B
05-2355	Fine Collamer & ICL Loading...	22	
8-01336	Fine Foldable Lens Insertion...	28	A
05-2332	Fine Foldable Lens Loading...	22	C
05-2360	Fine Head-Tilt Caps...	7	D
05-2331-L	Fine I Inserter Straight...	22	
05-2331	Fine I Inserter Straight...	22	D
05-2334	Fine II Inserter Angled w/Lock...	22	
05-2334-A	Fine II Inserter Angled...	22	
05-2334-AL	Fine II Inserter, Angled...	22	E
05-2334-L	Fine II Inserter, Straight...	22	
05-2333	Fine Lens Loading Forceps...	22	F
05-2323	Formed Utrata/Kershner...	8	A
8-01715	Francis Chalazion Forceps...	10	D
8-01345	Gaskin Fragment Forceps...	34	A
05-2127	Gaskin, Angled, 11mm, 3-3/8"...	41	C
8-01216	Gill (Chandler) Serrated Tip...	15	E
8-01215	Gill, 1x2 Teeth, Curved...	15	F
8-01243	Girard Corneo- Scleral...	16	A
05-2361	Goldman Capsulorrhexis...	8	B
8-01626	Gradle Cilia Forceps, 1.4mm...	12	D
8-01208	Graefe Iris, Serrated Tip...	16	C
8-01207	Graefe Iris, 1x2 Teeth, Cur...	16	
8-01206	Graefe Iris, 1x2 Teeth, Stra...	16	B
8-01209	Graefe Iris, Serrated Tip, Cur...	16	
8-01291	Green Fixation, 5mm...	16	D
85-5024	Halsted Mosquito Forceps, 5"...	36	A
85-5023	Halsted Mosquito Forceps, 5"...	36	B
85-5026	Halsted Mosquito Forceps, 5"...	36	C
85-5025	Halsted Mosquito Forceps...	36	D
8-01221	Harms Colibri Forceps .12mm...	16	E
8-01109	Harms Tying Forceps, Curved...	38	
8-01108	Harms Tying Forceps, Strai...	38	C
85-5019	Hartman Mosquit Forceps...	36	E
85-5018	Hartman Mosquito Forceps...	36	
05-2410	Hess Memory Lens...	23	A
8-01711	Hunt Chalazion Forceps...	11	A
8-01302	Hyde Corneal Forceps, 2x2...	14	B
8-01110	Jaffe Tying Forceps, Straight...	38	D
8-01111	Jaffe Tying Forceps, Curved 6mm...	38	
8-01630	Jameson Muscle Forceps, Left...	35	E
8-01631	Jameson Muscle Forceps, Right...	35	
8-01603	Jeweler Forceps, #1, Straight...	26	A

Index

Number	Description	Pg.	Photo
8-01604	Jeweler Forceps, #2, Straight...	26	B
8-01605	Jeweler Forceps, #3, Straight...	26	C
8-01606	Jeweler Forceps, #3C, Straight...	26	D
8-01607	Jeweler Forceps, #4, Straight...	27	A
8-01611	Jeweler Forceps, #5, Straight...	27	B
8-01608	Jeweler Forceps, #5, Straight...	27	C
8-01609	Jeweler Forceps, #7, Straigh...	27	D
8-13222	Jewelers Bi-Polar Forceps...	3	
05-2400	Kellan Inserter-Titanium...	23	B
05-2124	Kelman/McPherson, Angled...	42	A
8-01103	Kelman/McPherson, Round...	39	B
8-01219	Kelman/McPherson, 1x2...	18	
8-01102	Kelman/McPherson, Angled...	39	A
05-2123	Kelman/McPherson, Angled...	41	D
8-01421-L	Kershner Butterfly Caps...	3	C
8-01421-S	Kershner Butterfly Caps...	3	D
05-2320	Kershner Capsulorrhexis...	8	C
8-01338	Kershner Foldable Lens Inser...	29	B
8-01422-N	Kershner II 23g Stainless...	4	A
8-01416	Khoury Nuclear Fragment	5	A
8-01310	Knolle/Shepard w/Peg...	34	B
05-2351	Koch-Salz Nucleus Splitter...	37	A
8-01318	Kraff Lens Insertion Forceps...	29	C
8-01285	Kremer Fixation Forceps 1x2...	17	B
8-01284	Kremer Fixation Forceps 1x2...	17	
8-01710	Lambert Chalazion Forceps...	11	B
8-01380	Lehner I Lens Inserter...	29	D
05-2402	Lehner I Loader-Titanium...	23	C
05-2377	Lehner II Acrylic Lens Insert...	23	D
05-2376	Lehner II Acrylic Lens Load...	23	E
8-01294	Lester Fixation 1x2 Teeth...	17	C
8-01295	Lester Fixation 2x3 Teeth...	17	D
05-2375	Lindstrom Lens Inserter...	24	A
05-2330	Lindstrom Lens Insertion For...	30	
05-2325	Lindstrom Lensw/Notch...	30	A
8-01270	Maumenee Colibri 5mm Tying...	17	E
8-13220	McPherson Angled Bi-Polar...	3	
8-13219	McPherson Straight Bi-Polar...	3	B
8-01218	McPherson, 1x2 .12mm...	18	A
8-01217	McPherson, 1x2 .12mm Teeth...	18	
05-2232	McPherson, Angled...	21	A
05-2119	McPherson, Angled, 5mm...	42	B
8-01107	McPherson, Angled, Micro...	39	C
05-2120	McPherson, Angled, 5mm...	42	
8-01106	McPherson, Straight, Micro...	39	
05-2344	Nichamin I Foldable Lens...	24	B
05-2342	Nichamin I Foldable Lens...	24	C
05-2348	Nichamin II Foldable Lens...	24	D
05-2346	Nichamin II Foldable Lens...	25	A
05-2349	Nichamin III Foldable Lens...	25	B
05-2350	Nichamin IV Foldable Lens...	25	C
8-01124	Pfister PKP Suture Adjus...	39	D
8-01224	Pierse Colibri, .1mm Teeth...	18	B
8-01225	Pierse Colibri, .3mm Teeth...	18	
05-2212	Pierse Type, Curved, Platform...	21	
05-2211	Pierse Type, Straight...	21	B
8-01261	Polack, Double .12mm...	18	C

Index

Number	Description	Pg.	Photo
8-01262	Polack, Double Corneal Fix...	18	
8-01392-D	Rhein Artisan Lens Holding...	33	B
8-01392-R	Rhein Artisan Lens Holding...	33	
05-2326	Rhein Capsulorrhexis...	8	D
05-2321	Rhein Colbri Capsulorrhexis...	7	E
05-2340	Rhein Cross Action Pierse...	30	C
8-01398	Rhein Crystalens Lens Inser...	31	E
8-01334	Rhein I Lens Holding Forceps...	33	C
8-01397	Rhein ICL Retrieval Forceps...	31	D
8-01339	Rhein II Lens Holding Forceps...	33	D
05-2338-R	Rhein III Foldable Lens...	25	D
8-01427	Rhein Tubular 23g Caps.....	5	B
05-2362	Rhein Tubular 23g Caps...	9	A
05-2311	Rhein Universal Lens Inser...	30	B
05-2218	Rhein, Straight, 45 Degree...	21	C
05-2134	Rhein/Maumenee Cross Action...	42	C
05-2131	Round Handle w/Flat Ridge...	42	D
05-2130	Round Handle w/Flat Ridge...	43	A
8-01428	Sabet Lenticular Safety Net...	4	B
8-01428-B	Sabet Lenticular Safety Net...	4	
05-2335	Salz Nucleus Splitter...	37	B
8-01271	Sauer Suturing Forceps...	18	E
8-01300	Schlemm's Canal Tissue...	35	A
05-2233	Schlemm's Canal Tissue For...	35	B
05-2336	Seibel Loader w/Lock...	25	E
8-01390	Serdarevic Lens Inserter...	30	D
8-13110	Serrefine 1-1/2", Curved...	37	C
8-13108	Serrefine 1-1/2", Straight...	37	D
8-13109	Serrefine 2-1/2", Straight...	37	
8-13111	Serrefine 2-1/2", With Suture...	37	
8-01101	Sheets McPherson Forceps...	40	A
8-01325	Shepard Lens Insertion...	31	B
05-2312	Shepard Lens Insertion...	31	A
8-01426	Short Capsulorrhexis Forceps...	5	D
8-01425	Short Capsulorrhexis...	6	A
8-01423	Short Capsulorrhexis Forceps...	5	E
8-01424	Short Capsulorrhexis Short...	5	C
8-01121	Sinsky Tying Forceps, Curved...	40	B
8-01708	Snellen Entropium Forceps...	11	C
8-01707	Snellen Entropium Forceps...	11	
8-01303	Steinert DSEK Insertion Forceps	35	C
8-01347	Stolte Hawksbill Pre-Chopper...	34	D
8-01346-A	Stolte Pre-Chopper Straight...	34	E
05-2111	Straight 3-3/8"-Titanium...	43	B
05-2120	Straight, 4"-Titanium...	43	C
8-01298	Tennant Superior Rectus...	19	A
8-01114	Tennant Tying Forceps...	40	D
8-01115	Tennant Tying Forceps, Curved...	40	C
05-2341-R	The Fine III Inserter Angled...	25	
05-2339-R	The Fine III Inserter Angled...	25	F
8-01239	Thorpe Corneal Forceps...	19	B
8-01234	Tissue, Delicate, 1x2...	19	C
8-01235	Tissue, Delicate, 1x2 Teeth...	19	
8-01299	Troutman Superior Rectus...	19	D
8-01413	Utrata Capsulorrhexis Forceps...	6	B
8-01414	Utrata Capsulorrhexis Forceps...	6	C
05-2318	Utrata Capsulorrhexis Forceps...	9	B
05-2319	Utrata Capsulorrhexis Forceps...	9	C

Index

Number	Description	Pg.	Photo
8-01341	Utrata Foldable Lens Ret...	34	C
8-01415	Utrata/Kershner Caps...	6	D
05-2322	Utrata/Kershner Caps...	9	D
8-01352	Vukich Collamer & ICL Cart...	32	D
8-01396	Vukich Loading Forceps...	32	C)
8-01714	Wies Chalazion Forceps...	11	D
8-01620	Ziegler Cilia Forceps, 3-1/2"...	12	E



ELEVATING THE QUALITY OF CARE IN OPHTHALMOLOGY
800-637-4346



**RHEIN MEDICAL
HAS OTHER
QUICK REFERENCE
CATALOGS
FOR YOUR LIBRARY**

- **BI-MANUAL**
- **CHOPPERS**
- **DIAMOND KNIVES**
- **FORCEPS**
- **GLOBAL FIXATION**
- **REFRACTIVE**
- **REUSABLE CANNULAS**
- **SCISSORS**
- **SPATULAS, DILATORS,
HOOKS & MANIPULATORS**
- **SINGLE USE PRODUCTS**
- **SPECULUMS**
- **STAINLESS STEEL KNIVES**

Please Contact Our Customer Service Department At 1-800-637-4346 Or Email Your Request To Info@RheinMedical.com



5460 Beaumont Center Blvd., Suite 500, Tampa, FL 33634 • 800-637-4346 • Tel: 813-885-5050 • Fax: 813-885-9346
Email: Info@RheinMedical.com • Website: www.RheinMedical.com

All Rhein Products Meet The Requirements Established Within The European Union
Background Photo- Francesco Melzi, Flora